

# BFLON LINED VALVES

## TECHNICAL DATA SHEET

### DIAPHRAGM VALVE (FLUOROPOLYMER / FEP / PFA LINED)

Format No.: MKT/TDS/21-01

Issue No.: 01

Issue Date : 01/01/2021

Rev. No. : R0

1 CLIENT :	6 ENQUIRY NO. :
2 CONSULTANT :	7 QUOTATION NO. :
3 PROJECT NAME :	8 DATA SHEET NO. : TDS/LDFVA/
4 PROJECT LOCATION :	9 PIPING CLASS :
5 PROJECT NUMBER :	10 TAG NO. :

### PROCESS DATA / APPLICATION

11 FLUID / SERVICE : ***	16 OPERATING TEMPERATURE : ***
12 FLUID DENSITY : *** kg/m <sup>3</sup>	17 OPERATING PRESSURE : ***
13 VISCOCITY : *** Cp	18 DESIGN TEMPERATURE : ***
14 SOLID CONCENTRATION : *** wt%	19 DESIGN PRESSURE : ***
15 NATURE OF FLUID : ***	20 MIN. SERVICE TEMPERATURE : ***

### TECHNICAL STANDARD AND DESIGN CONSTRUCTION

21 DESIGN STANDARD : BS EN 13397 (BS 5156)	27 PRESSURE RATING : 150#
22 TESTING STANDARD : API 598 / BS EN 12266-1	28 LEAKAGE CLASS : CLASS VI (6)
23 END CONNECTION : FLANGED END RF	29 MFG. SIZE RANGE : 1" TO 6"
24 FACE TO FACE : BS EN 558 - 1, SERIES 7	30 OPERATION : HAND WHEEL
25 FLANGE DRILLING : ASME B 16.5, 150#	31 FLOW DIRECTION : BI-DIRECTIONAL
26 TYPE : "A" WEIR PATTERN	32 INSTALLATION : HTL / VTL BOTH

### MAERIAL OF CONSTRUCTION

PART NAME	MATERIAL			
33 BODY	A 216 GR WCB (CAST CARBON STEEL)	A 395 (DUCTILE IRON)	A 351 GR CF8/CF3 (S.S. 304/304L)	A 351 GR CF8M/CF3M (S.S. 316/316L)
34 BONNET				
35 COMPRESSOR	WCB/CF8/CF8M	WCB/CF8/CF8M	WCB/CF8/CF8M	WCB/CF8/CF8M
36 LINING	FEP / PFA / PTFE	FEP / PFA / PTFE	FEP / PFA / PTFE	FEP / PFA / PTFE
37 DIAPHRAGM	NEOPRENE + PTFE	NEOPRENE + PTFE	NEOPRENE + PTFE	NEOPRENE + PTFE
38 STEM	S.S. 304	S.S. 304	S.S. 304	S.S. 304
39 HAND WHEEL	DUCTILE IRON	DUCTILE IRON	DUCTILE IRON	DUCTILE IRON
40 FASTENERS	S.S.	S.S.	S.S.	S.S.
41				
42				
43				
44				
45				
46	OTHERS FLUOROPOLYMER / PLASTIC LINING MATERIAL CAN AVAILABLE ON REQUEST			

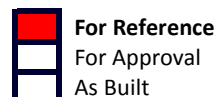
### OPTIONAL ACCESSORIES

### PRESSURE TESTING & INSPECTION

47	54 BODY (HYDROSTATIC) : 15.0 KG/CM2
48	55 SEAT (HYDROSTATIC) : 11.0 KG/CM2
49	56 TESTING MEDIA : WATER & ROOM TEMP.
50	57 SEAT (AIR / PNEUMATIC) : 6.0 KG/CM2
51	58 LINING TEST / SPARK TEST : 15 KV DC
52	59 INSEPTION BY : BFLON
53	60 PAINTING : MFG STD

### NOTE :

- \*\*\* Marked Data Required From Client
- 3rd Party Inspection Charges Borne By Purchaser
- If any Third Party Inspection Clear At The Time of Enquiry
- Any Special Requirements Related To Product Clear In Enquiry



Prepared By  
Checked By  
Approved By



BFLON LINED VALVES - Ahmedabad, Gujarat, INDIA.

E-mail: sales@bflonptfinedvalves.com Website: www.bflonptfinedvalves.com